



Illinois State Board of Education

Illinois State Board of Education Special Education Overview

The Arc of Illinois – October 20, 2020

Barbara Moore, State Director of Special Education

Equity • Quality • Collaboration • Community

Welcome and Introduction

2

Thank you for the work you do each and every day in keeping our children safe, healthy, and supported inside and outside of school.



Agenda

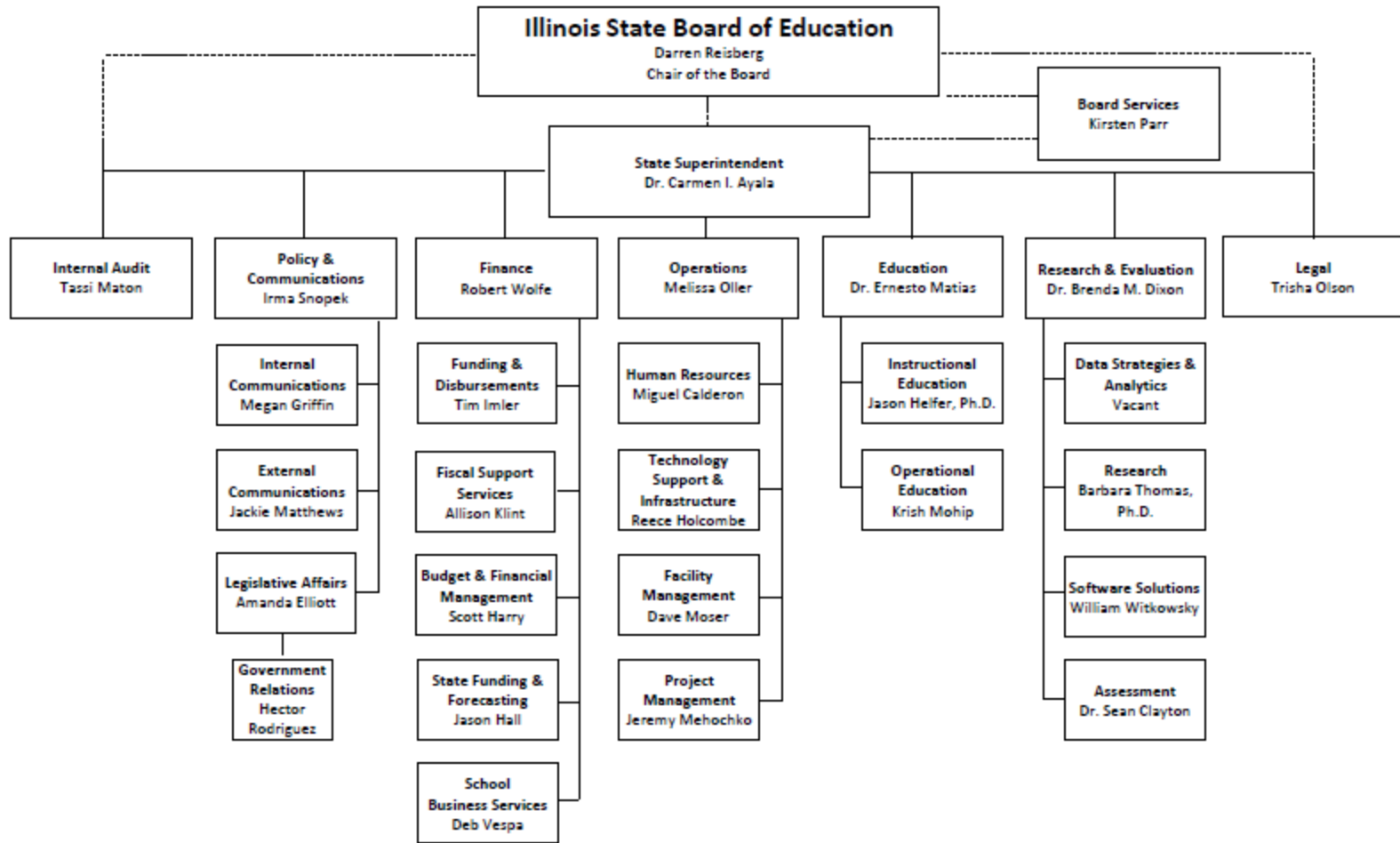
3

- **Agency Overview**
- **Special Education Department Organization**
- **Special Education Department Projects & Resources**
- **COVID19 Resources**
- **Conclusion**



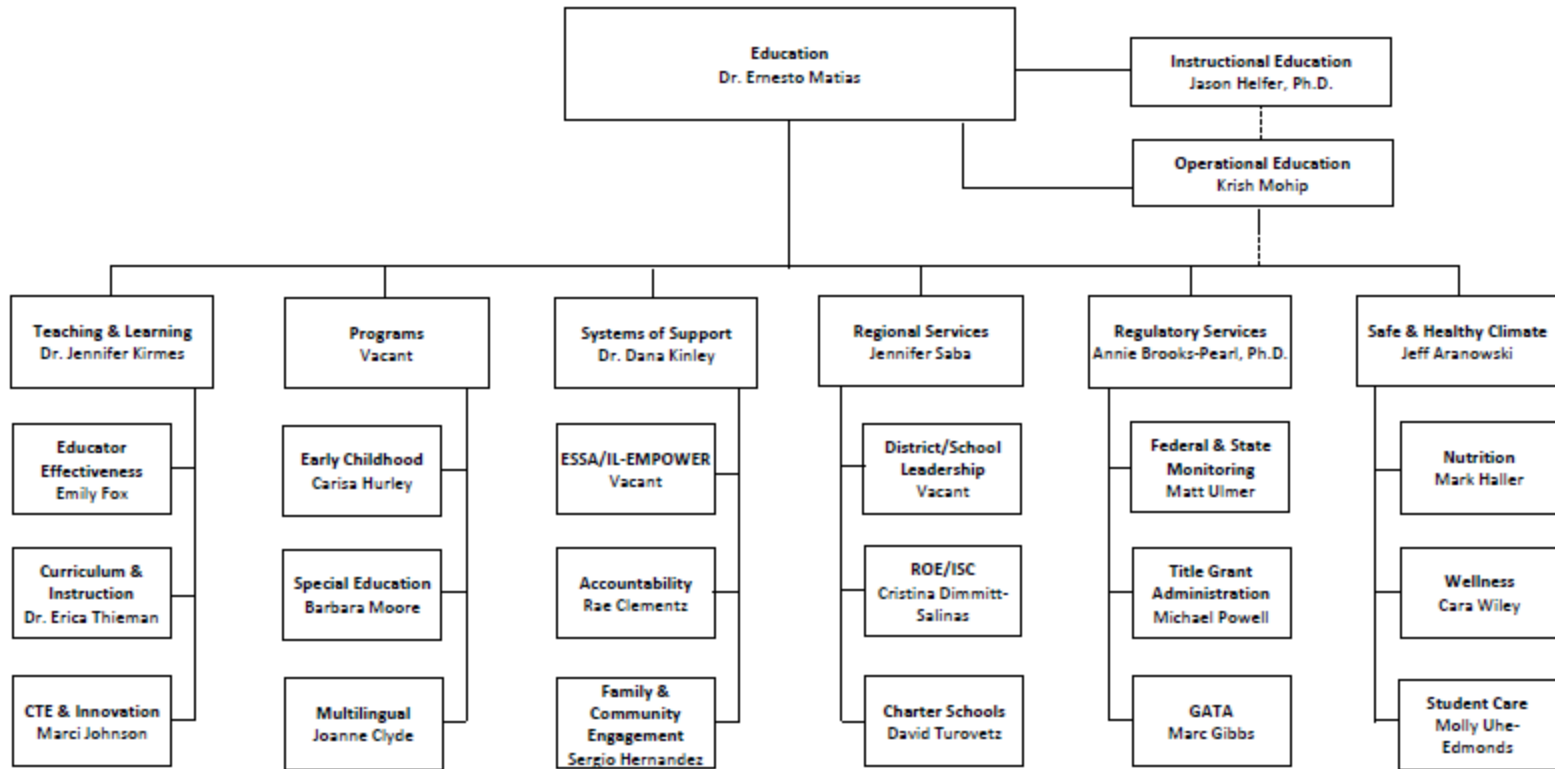


Illinois State Board of Education

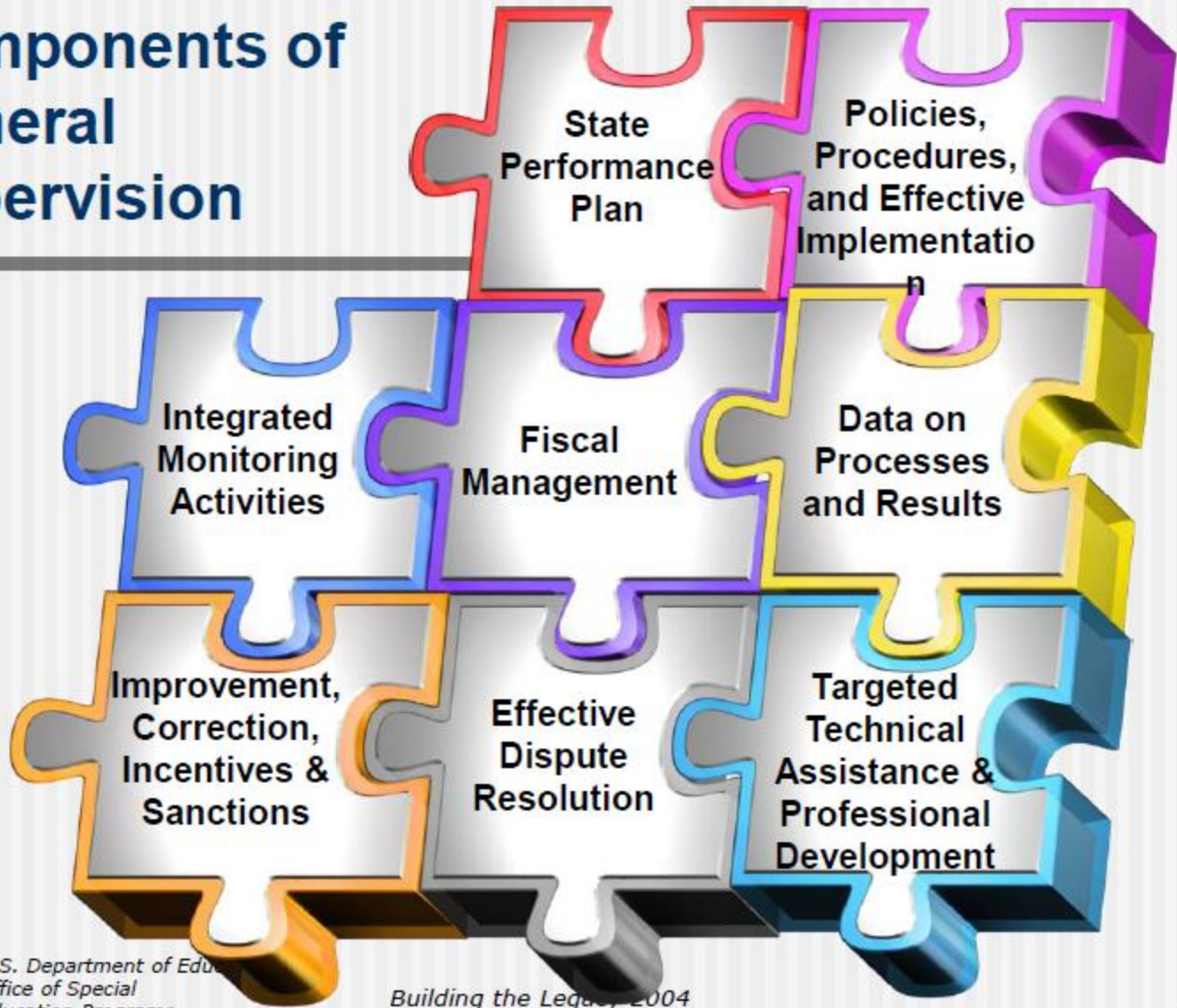




Illinois State Board of Education



Components of General Supervision



U.S. Department of Education
Office of Special
Education Programs

Building the Legacy 2004



Illinois
State Board of
Education

Department Organization

7

- Management Team
 - Director, 3 Supervisors
- Grants Team
- Dispute Resolution Team
- Data Team
- Monitoring Team
- Specialized Supports Team
- Withdrawals and Placements Team
- Non-Public Team
- Technical Team
- Program Specialists Team



Management Team

8

- Barbara Moore, Director
- Tammy Greco, Supervisor
- Maggie Kuykendall, Supervisor
- Abbey Storey, Supervisor



Data Team

9

- Responsible for State Performance Plan/Annual Performance Report and State Systemic Improvement Plan
- Special Education Pupil and Personnel Data
- Submission to US Department of Education Office of Special Education Programs



Monitoring Team

10

- Monitoring and coaching for school districts
 - NEW 2020 – Special Education Accountability and Support System
- Technical assistance and professional development
- Oversee contracts and grants
- Parent engagement
- Postsecondary Transition



Specialized Supports Team

11

- Deaf and Hard of Hearing, Visual Impairment, Low Incidence Disabilities (e.g. Intellectual Disabilities, Multiple Disabilities)
- Specialized Populations – Autism, SLD, ED, English Learners with Disabilities
- Equity and Discipline



Withdrawals and Placement Team

12

- District withdrawals from special ed cooperatives; comprehensive plans for cooperatives
- Residential placements
- Home/hospital placements
- Nonpublic/parochial placements
- Charter School – Special education
- Educational Surrogate Parents for Youth In Care
- Assistive Technology



Dispute Resolution Team

13

- Complaint Investigations
- Mediation
- IEP Facilitation
- Due Process Hearings
- <https://www.isbe.net/Pages/Special-Education-Effective-Dispute-Resolution.aspx>



Grants Team

14

- IDEA Part B Flowthrough & IDEA Part B Preschool Approvals
- Other Grant Approvals

Technical Team and Program Specialists Teams

15

- Receptionist to answer phones and direct calls
- Support Management and Consultants
- Maintain Website



Non-Public Team

16

- Approval of Illinois and Out-of-State Non-Public Special Education Residential and Schools
- Facility Evaluations
- Private Facility Search



Special Education Projects: Assistive Technology

17

- Assistive Technology Device Loan and Evaluation – Illinois Assistive Technology Program (IATP)
- Assistive Technology Training and Resources – UCP Seguin Infnitec
- Assistive Technology Exchange Network – UCP Seguin Infnitec



Special Education Projects: Deaf/Hard of Hearing/Visual Impairment

18

- Philip J Rock Center and School
- Project Reach – Services for Deaf Blind
- Illinois Deaf and Hard of Hearing Commission
- Illinois Service Resource Center – Services for Deaf and Hard of Hearing with Behavior Needs
- Educational Materials Center at Chicago Lighthouse – materials for schools for students with visual impairments
- Learning Ally – audiobooks for schools for students who with visual impairments or dyslexia



Special Education Projects: Autism

19

- Autism Learning and Support Project – Illinois State University – professional development to schools on addressing behavior needs of students with autism
- Autism Training and Technical Assistance Project – Illinois State University – professional development on meeting transition needs of students with autism



Special Education Projects: Transition

20

NEW in 2020!

Center for Transition and Work – University of Illinois
– Supports schools in meeting transition needs for
students with intellectual disabilities



Special Education Projects: Juvenile Justice

21

Educational Liaisons at Illinois Department of
Juvenile Justice

Assist with transitioning students who are
incarcerated to return to public school

IDEA Part D SPDG (ROE47/IL-MTSS; ROE 9, 11, 47, 54



Special Education Disability Resources:

22

Disability Information

<https://www.isbe.net/Pages/Special-Education-Disability-Areas.aspx>

Dyslexia Handbook

<https://www.isbe.net/Documents/Dyslexia-Handbook.pdf>



Special Education Resources

23

Early Childhood Special Education

<https://www.isbe.net/Pages/early-childhood-special-education-services.aspx>

English Learners with Disabilities

<https://www.isbe.net/Pages/EL-IEPs.aspx>

Mental Health Resources

<https://www.isbe.net/Pages/MentalHealthResources.asp>

X



Special Education Projects: Parent and Family Engagement

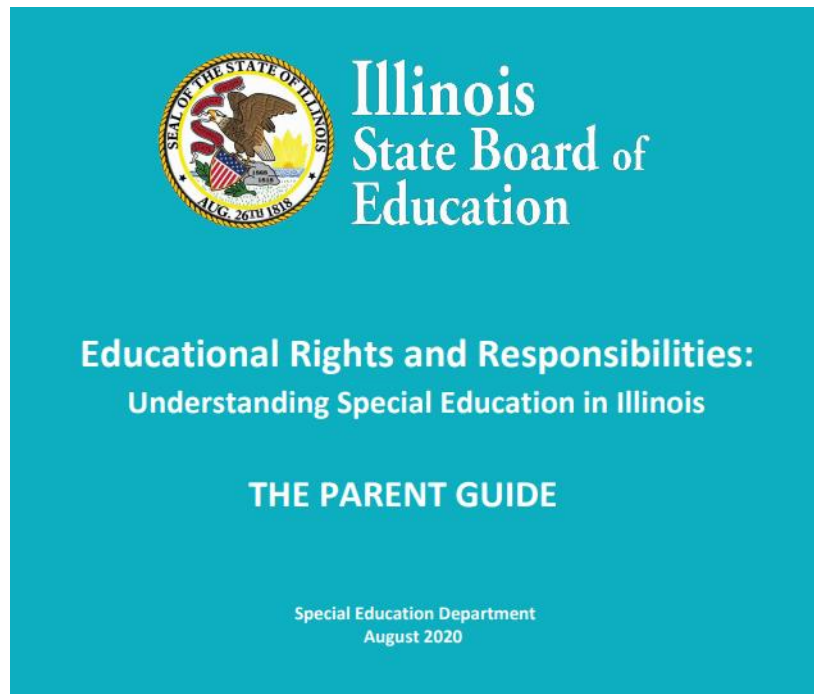
24

- Educational Surrogate Parent Program for Youth in Care
- Collaboration with the ISBE Department of Parent and Family Engagement
- Collaboration with the Parent Training and Information Centers



Educational Rights and Responsibilities: Understanding Special Education in Illinois Parent Guide

25



Revised August 2020

<https://www.isbe.net/Documents/Parent-Guide-Special-Ed-Aug20.pdf>

Parent Training and Information Centers

26

Region 1 – Counties of Cook, DuPage, Grundy, Kane, Kendall, Lake, McHenry, Will

- Family Resource Center on Disabilities
20 E. Jackson Blvd., Room 300
Chicago, IL 60604
312-939-3513 voice / 312-939-3519 TTY & TDY
312-939-7297 FAX
800-952-4199 IL only
E-mail: frcdptil@ameritech.net
Website: www.frcd.org

Parent Training and Information Centers

27

Region 2 – covers rest of the state

- Family Matters
1901 S. 4th Street, Suite 209
Effingham, IL 62401
217-347-5428 voice
217-347-5119 FAX
866-436-7842 Toll-Free
E-mail: info@fmptic.org or deinhorn@arc-css.org
Website: www.fmptic.org



COVID19 Updates and Resources

28

The screenshot shows the Illinois State Board of Education website. The browser address bar displays "isbe.net". The website header includes the ISBE logo, the text "Illinois State Board of Education", and navigation links for "System Quick Links", "Illinois Report Card", "Careers at ISBE", and "Contact Us". Social media icons for Twitter, Facebook, and YouTube are also present, along with a search bar and a "Translate" dropdown.

The main navigation menu is a dark blue bar with the following items: HOME, ADMINISTRATORS, TEACHERS, FAMILIES & STUDENTS, COMMUNITY & PARTNERS, NEWS & MEDIA, and TOPICS.

A prominent banner at the top of the content area reads: **! BE COUNTED! COMPLETE THE U.S. CENSUS AT MY2020CENSUS.GOV!**

Below the banner are two columns of content:

- CURRENT TOPICS:** A dark blue box with the text "CTE during COVID-19?" in large yellow letters. Below it, it says "Listen to learn how COVID-19 changed CTE in D214" with a play button icon. To the right is a graphic that says "WE LOVE ILLINOIS SCHOOLS" with a map of Illinois and headphones.
- LATEST NEWS:** A list of four news items:
 - 9/29/2020: ISBE announces 10 Regional Teachers of the Year now in the running for top educator award
 - 9/21/2020: Pritzker Administration awards more than \$80 million to Illinois schools to close digital divide
 - 9/14/2020: ISBE seeks community input on state funding for public education
 - 9/11/2020: ISBE announces agenda for virtual annual planning retreat and regular business meeting Sept. 16-17



Illinois
State Board of
Education

Equity • Quality • Collaboration • Community

COVID19 Resources

29

Guidance Documents

<https://www.isbe.net/Pages/covid19.aspx#>

Special Education Guidance Documents

<https://www.isbe.net/Pages/Special-Education-Programs.aspx>

Parent FAQ

<https://www.isbe.net/Documents/Special-Education-FAQ-Parents-81420.pdf>

Remote Learning Resources

<https://www.isbe.net/keeplearning>



Where to Go with Questions

30

CONTACT INFORMATION

Questions? Please email COVID19@isbe.net with any questions or concerns.

Conclusion

31

Barbara Moore

bmoore@isbe.net

Special Education Department

217-782-5589



Illinois
State Board of
Education